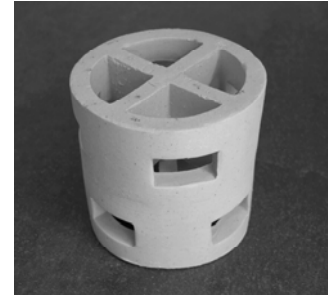


Raflux-Rings 50-5 Ceramics

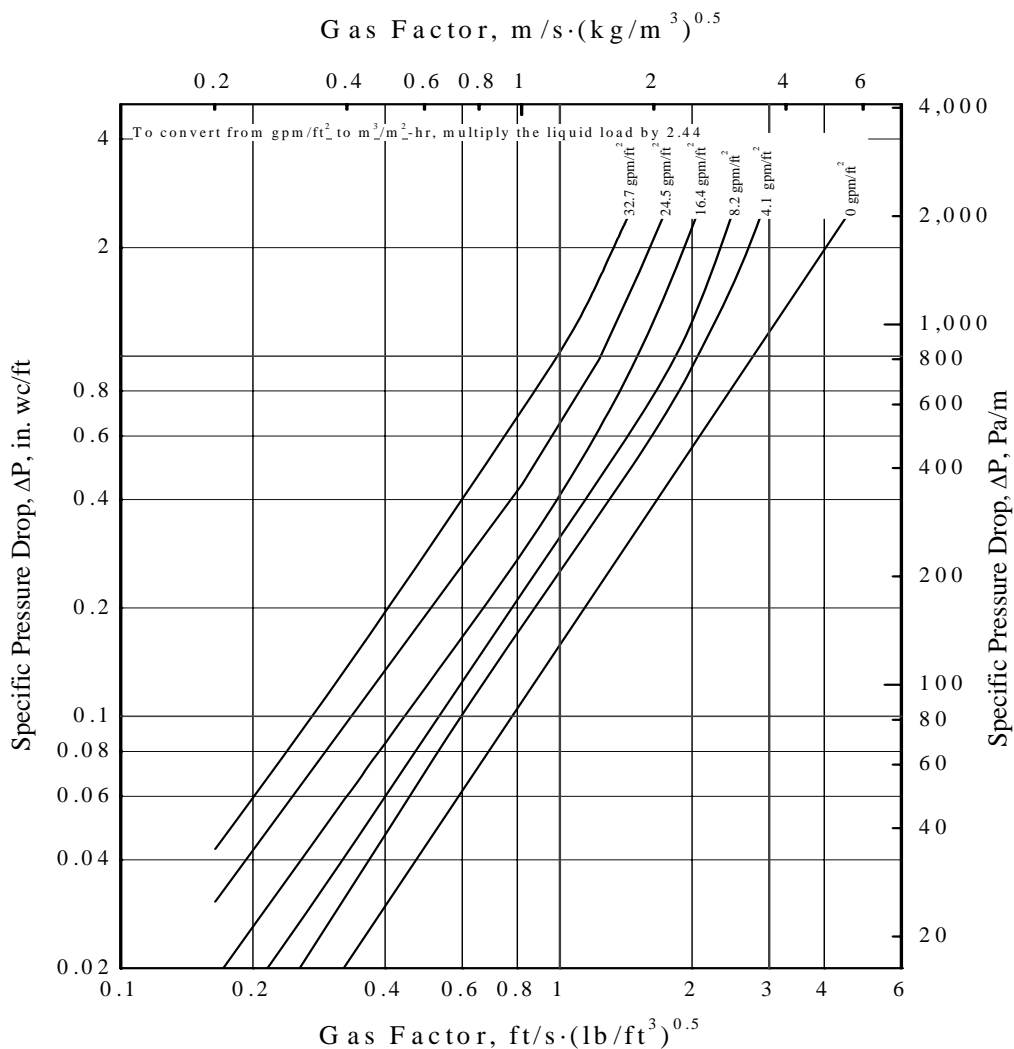


Physical data

Nominal size	2 in	50 mm
Weight	34.3 lb/ft ³	550 kg/m ³
Surface area	36.6 ft ² /ft ³	120 m ² /m ³
Void fraction	77 %	
Material	stoneware	
Available material	porcelain and others on request	



Pressure drop (Air/water, 68 °F, 14.5 PSI)



KE223 02.05.06

The values indicated above apply for a ratio of diameter of vessel to tower packings of $D/d = 20$.

All information presented herein is believed to be accurate and reliable but does not constitute a warranty or performance guarantee on part of RVT Process Equipment GmbH.